

(23) 2011 Year Eleven Examination Results Table.

Numbers of Grades		Boys		Girls		Total		(PLASC 2011)						No	
Y11 Group:		107	105	77	75	184	180	GCSE Equivalent Grades						A*-C	
Score	Mean Grade	Full Courses SUBJECT	Gender	No Sat	A*	A	B	C	D	E	F	G	U	X	A*-C
1260	38.2	Art	Boys	33	1	5	4	15	0	1	3	4	0	0	25
1572	43.7		Girls	36	4	7	9	12	0	0	3	1	0	0	32
2832	41.0		Total	69	5	12	13	27	0	1	6	5	0	0	57
4136	39.8	Bus & Com Sys	Boys	104	2	14	22	34	17	6	5	4	0	0	72
3194	42.6		Girls	75	1	16	25	20	5	5	2	0	1	0	62
7330	40.9		Total	179	3	30	47	54	22	11	7	4	1	0	134
752	37.6	Bus Studs	Boys	20	0	1	3	6	8	1	1	0	0	0	10
582	38.8		Girls	15	0	0	3	8	3	0	1	0	0	0	11
1334	38.1		Total	35	0	1	6	14	11	1	2	0	0	0	21
86	43.0	Chinese	Boys	2	0	0	1	1	0	0	0	0	0	0	2
58	58.0		Girls	1	1	0	0	0	0	0	0	0	0	0	1
144	48.0		Total	3	1	0	1	1	0	0	0	0	0	0	3
3180	64.9	CIDA	Boys	49	0	12	26	34					26	0	72
1632	77.7	(=X2 Grades)	Girls	21	0	8	16	12					6	0	36
4812	68.7		Total	70	0	20	42	46					32	0	108
0	0.0	Dance	Boys	0	0	0	0	0	0	0	0	0	0	0	0
616	32.4		Girls	19	0	1	2	1	4	9	2	0	0	0	4
616	32.4		Total	19	0	1	2	1	4	9	2	0	0	0	4
3162	31.3	Design Tech.	Boys	101	0	2	10	25	15	18	20	9	2	0	37
2930	39.6		Girls	74	0	6	28	15	12	7	5	1	0	0	49
6092	34.8		Total	175	0	8	38	40	27	25	25	10	2	0	86
732	40.7	Drama	Boys	18	1	1	4	6	5	1	0	0	0	0	12
1014	48.3		Girls	21	5	5	6	3	2	0	0	0	0	0	19
1746	44.8		Total	39	6	6	10	9	7	1	0	0	0	0	31
4244	39.7	English Lang	Boys	107	1	7	16	57	16	7	3	0	0	0	81
3236	42.0		Girls	77	3	9	15	40	5	4	1	0	0	0	67
7480	40.7		Total	184	4	16	31	97	21	11	4	0	0	0	148
4138	38.7	English.Lit.	Boys	107	0	9	28	24	30	12	3	0	1	0	61
3216	41.8		Girls	77	0	10	40	9	11	3	1	1	2	0	59
7354	40.0		Total	184	0	19	68	33	41	15	4	1	3	0	120
0	0.0	French	Boys	0	0	0	0	0	0	0	0	0	0	0	0
258	43.0		Girls	6	0	0	4	1	1	0	0	0	0	0	5
258	43.0		Total	6	0	0	4	1	1	0	0	0	0	0	5
368	46.0	French (NVQ)	Boys	8	0	0	8	0	0	0	0	0	0	0	8
460	46.0		Girls	10	0	0	10	0	0	0	0	0	0	0	10
828	46.0		Total	18	0	0	18	0	0	0	0	0	0	0	18
1716	35.8	Geography	Boys	48	0	4	9	8	12	10	1	4	0	0	21
738	38.8		Girls	19	0	5	2	6	3	1	0	1	1	0	13
2454	36.6		Total	67	0	9	11	14	15	11	1	5	1	0	34
0	0.0	German	Boys	0	0	0	0	0	0	0	0	0	0	0	0
0	0.0		Girls	0	0	0	0	0	0	0	0	0	0	0	0
0	0.0		Total	0	0	0	0	0	0	0	0	0	0	0	0
1750	30.2	History	Boys	58	0	1	6	10	15	4	16	3	3	0	17
816	30.2		Girls	27	0	2	1	3	5	6	8	2	0	0	6
2566	30.2		Total	85	0	3	7	13	20	10	24	5	3	0	23
300	23.1	Law	Boys	13	0	1	1	3	0	0	3	1	4	0	5
654	29.7		Girls	22	0	1	2	4	3	4	4	3	1	0	7
954	27.3		Total	35	0	2	3	7	3	4	7	4	5	0	12
4276	40.0	Mathematics	Boys	107	3	13	27	31	15	11	5	1	1	0	74
3100	40.3		Girls	77	4	14	9	29	6	10	3	1	1	0	56
7376	40.1		Total	184	7	27	36	60	21	21	8	2	2	0	130
450	37.5	Music	Boys	12	0	0	3	4	2	3	0	0	0	0	7
240	40.0		Girls	6	0	1	2	1	0	2	0	0	0	0	4
690	38.3		Total	18	0	1	5	5	2	5	0	0	0	0	11
466	46.6	PE	Boys	10	1	1	6	2	0	0	0	0	0	0	10
276	46.0		Girls	6	0	1	4	1	0	0	0	0	0	0	6
742	46.4		Total	16	1	2	10	3	0	0	0	0	0	0	16
2072	94.2	PE (BTEC)	Boys	22	0	12	28	4							44
1524	101.6	(=X2 Grades)	Girls	15	8	12	6	4							30
3596	97.2		Total	37	8	24	34	8							74
278	30.9	Religious Studies	Boys	9	0	0	3	0	1	3	1	0	1	0	3
496	35.4		Girls	14	1	0	2	4	4	1	1	0	1	0	7
774	33.7		Total	23	1	0	5	4	5	4	2	0	2	0	10
2918	33.9	Science (Core)	Boys	86	0	3	16	18	15	22	6	3	3	0	37
2142	35.7		Girls	60	1	2	6	21	14	8	6	2	0	0	30
5060	34.7		Total	146	1	5	22	39	29	30	12	5	3	0	67
1624	40.6	Science (Additional)	Boys	40	0	2	13	14	9	2	0	0	0	0	29
1166	38.9		Girls	30	1	1	6	13	6	2	0	0	1	0	21
2790	39.9		Total	70	1	3	19	27	15	4	0	0	1	0	50
632	37.2	Science x3(Biology)	Boys	17	0	0	2	8	5	1	1	0	0	0	10
556	42.8		Girls	13	0	0	8	4	0	1	0	0	0	0	12
1188	39.6		Total	30	0	0	10	12	5	2	1	0	0	0	22
864	41.1	Science x3(Chemistry)	Boys	21	0	3	7	5	3	3	0	0	0	0	15
682	42.6		Girls	16	0	4	5	4	2	0	0	1	0	0	13
1546	41.8		Total	37	0	7	12	9	5	3	0	1	0	0	28
882	42.0	Science x3(Physics)	Boys	21	1	3	4	10	1	1	1	0	0	0	18
694	43.4		Girls	16	0	3	6	4	3	0	0	0	0	0	13
1576	42.6		Total	37	1	6	10	14	4	1	1	0	0	0	31
3516	78.1	Science (BTEC)	Boys	45	0	2	22	60					6	0	84
2784	92.8	(=X2 Grades)	Girls	30	14	0	22	24					0	0	60
6300	84.0		Total	75	14	2	44	84	0	0	0	0	6	0	144
184	46.0	Spanish	Boys	4	0	0	4	0	0	0	0	0	0	0	4
694	43.4		Girls	16	0	3	6	4	3	0	0	0	0	0	13
878	43.9		Total	20	0	3	10	4	3	0	0	0	0	0	17
0	0.0	Spanish NVQ	Boys	0	0	0	0	0	0	0	0	0	0	0	0
138	46.0		Girls	3	0	0	3	0	0	0	0	0	0	0	3
138	46.0		Total	3	0	0	3	0	0	0	0	0	0	0	3
308	38.5	Statistics	Boys	8	0	1	1	2	3	1	0	0	0	0	4
40	40.0		Girls	1	0	0	0	1	0	0	0	0	0	0	1
348	38.7		Total	9	0	1	1	3	3	1	0	0	0	0	5
52		Urdu	Boys	1	0	1	0	0	0	0	0	0	0	0	1
0			Girls	0	0	0	0	0	0	0	0	0	0	0	0
52	52.0		Total	1	0	1	0	0	0	0	0	0	0	0	1

Score	Mean Grade	GCSE Short Course SUBJECT	Gender	No Sat	A*	A	B	C	D	E	F	G	U	X	A*-C
344	36.2	Physical Ed.	Boys	9.5	0	0	2.5	3	0	3.5	0.5	0	0	0	5.5
122	30.5		Girls	4	0										

(24) 2011 Year Eleven Examination Results Table.

Percentages of Students

GCSE Full Course		% of	%	%	%	%	%	%	%	%	%	%	%
SUBJECT	Gender	Sat	A*	A	B	C	D	E	F	G	U	X	A*-C
Art	Boys	30.8	3.0	15.2	12.1	45.5	0.0	3.0	9.1	12.1	0.0	0.0	76
	Girls	46.8	11.1	19.4	25.0	33.3	0.0	0.0	8.3	2.8	0.0	0.0	89
	Total	37.5	7.2	17.4	18.8	39.1	0.0	1.4	8.7	7.2	0.0	0.0	83
Bus & Com Sys	Boys	97.2	1.9	13.5	21.2	32.7	16.3	5.8	4.8	3.8	0.0	0.0	69
	Girls	97.4	1.3	21.3	33.3	26.7	6.7	6.7	2.7	0.0	1.3	0.0	83
	Total	97.3	1.7	16.8	26.3	30.2	12.3	6.1	3.9	2.2	0.6	0.0	75
Bus Studs	Boys	10.9	0.0	5.0	15.0	30.0	40.0	5.0	5.0	0.0	0.0	0.0	50
	Girls	8.2	0.0	0.0	20.0	53.3	20.0	0.0	6.7	0.0	0.0	0.0	73
	Total	19.0	0.0	2.9	17.1	40.0	31.4	2.9	5.7	0.0	0.0	0.0	60
Chinese	Boys	1.9	0.0	0.0	50.0	50.0	0.0	0.0	0.0	0.0	0.0	0.0	100.0
	Girls	1.3	0.0	0.0	0.0	0.0	0.0	0.0	0.0	0.0	0.0	0.0	0.0
	Total	1.6	33.3	0.0	33.3	33.3	0.0	0.0	0.0	0.0	0.0	0.0	100.0
CIDA (=X2 Grades)	Boys	26.6		12.2	26.5	34.7					26.5	0.0	73.5
	Girls	11.4		19.0	38.1	28.6					14.3	0.0	85.7
	Total	38.0		14.3	30.0	32.9					22.9	0.0	77.1
Dance	Boys	0.0	0.0	0.0	0.0	0.0	0.0	0.0	0.0	0.0	0.0	0.0	0
	Girls	24.7	0.0	5.3	10.5	5.3	21.1	47.4	10.5	0.0	0.0	0.0	21
	Total	10.3	0.0	5.3	10.5	5.3	21.1	47.4	10.5	0.0	0.0	0.0	21
Design Tech.	Boys	94.4	0.0	2.0	9.9	24.8	14.9	17.8	19.8	8.9	2.0	0.0	37
	Girls	96.1	0.0	8.1	37.8	20.3	16.2	9.5	6.8	1.4	0.0	0.0	66
	Total	95.1	0.0	4.6	21.7	22.9	15.4	14.3	14.3	5.7	1.1	0.0	49
Drama	Boys	16.8	5.6	5.6	22.2	33.3	27.8	5.6	0.0	0.0	0.0	0.0	67
	Girls	27.3	23.8	23.8	28.6	14.3	9.5	0.0	0.0	0.0	0.0	0.0	90
	Total	21.2	15.4	15.4	25.6	23.1	17.9	2.6	0.0	0.0	0.0	0.0	79
English Lang	Boys	100.0	0.9	6.5	15.0	53.3	15.0	6.5	2.8	0.0	0.0	0.0	76
	Girls	100.0	3.9	11.7	19.5	51.9	6.5	5.2	1.3	0.0	0.0	0.0	87
	Total	100.0	2.2	8.7	16.8	52.7	11.4	6.0	2.2	0.0	0.0	0.0	80
English.Lit.	Boys	100.0	0.0	8.4	26.2	22.4	28.0	11.2	2.8	0.0	0.9	0.0	57
	Girls	100.0	0.0	13.0	51.9	11.7	14.3	3.9	1.3	1.3	2.6	0.0	77
	Total	100.0	0.0	10.3	37.0	17.9	22.3	8.2	2.2	0.5	1.6	0.0	65
French	Boys	0.0	0.0	0.0	0.0	0.0	0.0	0.0	0.0	0.0	0.0	0.0	0
	Girls	7.8	0.0	0.0	66.7	16.7	16.7	0.0	0.0	0.0	0.0	0.0	83
	Total	3.3	0.0	0.0	66.7	16.7	16.7	0.0	0.0	0.0	0.0	0.0	83
French (NVQ)	Boys	7.5	0.0	0.0	100.0	0.0	0.0	0.0	0.0	0.0	0.0	0.0	100
	Girls	13.0	0.0	0.0	100.0	0.0	0.0	0.0	0.0	0.0	0.0	0.0	100
	Total	9.8	0.0	0.0	100.0	0.0	0.0	0.0	0.0	0.0	0.0	0.0	100
Geography	Boys	44.9	0.0	8.3	18.8	16.7	25.0	20.8	2.1	8.3	0.0	0.0	44
	Girls	24.7	0.0	26.3	10.5	31.6	15.8	5.3	0.0	5.3	5.3	0.0	68
	Total	36.4	0.0	13.4	16.4	20.9	22.4	16.4	1.5	7.5	1.5	0.0	51
History	Boys	54.2	0.0	1.7	10.3	17.2	25.9	6.9	27.6	5.2	5.2	0.0	29
	Girls	35.1	0.0	7.4	3.7	11.1	18.5	22.2	29.6	7.4	0.0	0.0	22
	Total	46.2	0.0	3.5	8.2	15.3	23.5	11.8	28.2	5.9	3.5	0.0	27
Law	Boys	7.1	0.0	7.7	7.7	23.1	0.0	0.0	23.1	7.7	30.8	0.0	38
	Girls	12.0	0.0	4.5	9.1	18.2	13.6	18.2	18.2	13.6	4.5	0.0	32
	Total	19.0	0.0	5.7	8.6	20.0	8.6	11.4	20.0	11.4	14.3	0.0	34
Mathematics	Boys	100.0	2.8	12.1	25.2	29.0	14.0	10.3	4.7	0.9	0.9	0.0	69
	Girls	100.0	5.2	18.2	11.7	37.7	7.8	13.0	3.9	1.3	1.3	0.0	73
	Total	100.0	3.8	14.7	19.6	32.6	11.4	11.4	4.3	1.1	1.1	0.0	71
Music	Boys	11.2	0.0	0.0	25.0	33.3	16.7	25.0	0.0	0.0	0.0	0.0	58
	Girls	7.8	0.0	16.7	33.3	16.7	0.0	33.3	0.0	0.0	0.0	0.0	67
	Total	9.8	0.0	5.6	27.8	27.8	11.1	27.8	0.0	0.0	0.0	0.0	61
PE	Boys	9.3	10.0	10.0	60.0	20.0	0.0	0.0	0.0	0.0	0.0	0.0	100
	Girls	7.8	0.0	16.7	66.7	16.7	0.0	0.0	0.0	0.0	0.0	0.0	100
	Total	8.7	6.3	12.5	62.5	18.8	0.0	0.0	0.0	0.0	0.0	0.0	100
PE (BTEC) (=X2 Grades)	Boys	20.6		27.3	63.6	9.1					0.0	0.0	100.0
	Girls	19.5		40.0	20.0	13.3					0.0	0.0	100.0
	Total	20.1		32.4	45.9	10.8					0.0	0.0	100.0
Religious Studies	Boys	8.4	0.0	0.0	33.3	0.0	11.1	33.3	11.1	0.0	11.1	0.0	33
	Girls	18.2	7.1	0.0	14.3	28.6	28.6	7.1	7.1	0.0	7.1	0.0	50
	Total	12.5	4.3	0.0	21.7	17.4	21.7	17.4	8.7	0.0	8.7	0.0	43
Science (Core)	Boys	80.4	0.0	3.5	18.6	20.9	17.4	25.6	7.0	3.5	3.5	0.0	43
	Girls	77.9	1.7	3.3	10.0	35.0	23.3	13.3	10.0	3.3	0.0	0.0	50
	Total	79.3	0.7	3.4	15.1	26.7	19.9	20.5	8.2	3.4	2.1	0.0	46
Science (Additional)	Boys	37.4	0.0	5.0	32.5	35.0	22.5	5.0	0.0	0.0	0.0	0.0	73
	Girls	39.0	3.3	3.3	20.0	43.3	20.0	6.7	0.0	0.0	3.3	0.0	70
	Total	38.0	1.4	4.3	27.1	38.6	21.4	5.7	0.0	0.0	1.4	0.0	71
Science (BTEC) (=X2 Grades)	Boys	24.5	0.0	2.2	24.4	66.7					6.7	0.0	93.3
	Girls	16.3	23.3	0.0	36.7	40.0					0.0	0.0	100.0
	Total	40.8	9.3	1.3	29.3	56.0					4.0	0.0	96.0
Spanish	Boys	3.7	0.0	0.0	100.0	0.0	0.0	0.0	0.0	0.0	0.0	0.0	0.0
	Girls	15.0	0.0	18.8	37.5	25.0	18.8	0.0	0.0	0.0	0.0	0.0	81.3
	Total	18.7	0.0	15.0	50.0	20.0	15.0	0.0	0.0	0.0	0.0	0.0	85.0
Spanish NVQ	Boys	0.0	0.0	0.0	0.0	0.0	0.0	0.0	0.0	0.0	0.0	0.0	0.0
	Girls	2.8	0.0	0.0	100.0	0.0	0.0	0.0	0.0	0.0	0.0	0.0	100.0
	Total	2.8	0.0	0.0	100.0	0.0	0.0	0.0	0.0	0.0	0.0	0.0	100.0
Statistics	Boys	7.5	0.0	12.5	12.5	25.0	37.5	12.5	0.0	0.0	0.0	0.0	50
	Girls	1.3	0.0	0.0	0.0	100.0	0.0	0.0	0.0	0.0	0.0	0.0	100
	Total	4.9	0.0	11.1	11.1	33.3	33.3	11.1	0.0	0.0	0.0	0.0	56

GCSE Short Course		% of	%	%	%	%	%	%	%	%	%	%	%
SUBJECT	Gender	Sat	A*	A	B	C	D	E	F	G	U	X	A*-C
Physical Ed.	Boys	8.9	0.0	0.0	26.3	31.6	0.0	36.8	5.3	0.0	0.0	0.0	58
	Girls	5.2	0.0	0.0	37.5	0.0	0.0	37.5	12.5	0.0	12.5	0.0	38
	Total	7.3	0.0	0.0	29.6	22.2	0.0	37.0	7.4	0.0	3.7	0.0	52

||
||
||

(25) Average Point Scores by Gender

Boys	395.0
Girls	457.1
Total	426.0

(26) Design Technology by option

Mean Score	Grade	SUBJECT	Gender	No SAT	A*	A	B	C	D	E	F	G	U	X	No A*-C
		<i>Food</i>	Design Tech. Boys	34	0	0	5	15	8	5	1	0	0	0	20
			Girls	17	0	1	5	3	7	1	0	0	0	0	9
1932	37.9		Total	51	0	1	10	18	15	6	1	0	0	0	29
		<i>Product Design</i>	Design Tech. Boys	29	0	0	2	4	4	7	8	2	2	0	6
			Girls	17	0	0	2	3	3	5	3	1	0	0	5
1328	28.9		Total	46	0	0	4	7	7	12	11	3	2	0	11
		<i>Resistant Mat.</i>	Design Tech. Boys	38	0	2	3	6	3	6	11	7	0	0	11
			Girls	8	0	1	4	1	1	1	0	0	0	0	6
1444	31.4		Total	46	0	3	7	7	4	7	11	7	0	0	17
		<i>Textiles</i>	Design Tech. Boys	0	0	0	0	0	0	0	0	0	0	0	0
			Girls	32	0	4	17	8	1	0	2	0	0	0	29
1388	43.4		Total	32	0	4	17	8	1	0	2	0	0	0	29
		<i>Combined</i>	Design Tech. Boys	101	0	2	10	25	15	18	20	9	2	0	37
			Girls	74	0	6	28	15	12	7	5	1	0	0	49
6092	34.8		Total	175	0	8	38	40	27	25	25	10	2	0	86

(27) Modern Foreign Languages (Combined)

	Gender	No SAT	A*	A	B	C	D	E	F	G	U	X	No A*-C
Chinese	Boys	2	0	0	1	1	0	0	0	0	0	0	2
	Girls	1	1	0	0	0	0	0	0	0	0	0	1
	Total	3	1	0	1	1	0	0	0	0	0	0	3
French	Boys	0	0	0	0	0	0	0	0	0	0	0	0
	Girls	6	0	0	4	1	1	0	0	0	0	0	5
	Total	6	0	0	4	1	1	0	0	0	0	0	5
French NVQ	Boys	8	0	0	8	0	0	0	0	0	0	0	8
	Girls	10	0	0	10	0	0	0	0	0	0	0	10
	Total	18	0	0	18	0	0	0	0	0	0	0	18
Spanish	Boys	4	0	0	4	0	0	0	0	0	0	0	4
	Girls	16	0	3	6	4	3	0	0	0	0	0	13
	Total	20	0	3	10	4	3	0	0	0	0	0	17
Spanish NVQ	Boys	0	0	0	0	0	0	0	0	0	0	0	0
	Girls	3	0	0	3	0	0	0	0	0	0	0	3
	Total	3	0	0	3	0	0	0	0	0	0	0	3
Urdu	Boys	1	0	1	0	0	0	0	0	0	0	0	1
	Girls	0	0	0	0	0	0	0	0	0	0	0	0
	Total	1	0	1	0	0	0	0	0	0	0	0	1
MFL Combined	Boys	15	0	1	13	1	0	0	0	0	0	0	15
	Girls	35	0	4	21	6	4	0	0	0	0	0	31
	Total	50	0	5	34	7	4	0	0	0	0	0	46

(28) Other Qualifications.

Cert' in Prep' For Working Life This examination is recognised as the equivalent of ½ a GCSE

Mean Score	Grade	No Sat	Distinctions (Level 2)	Passes (Level 1)	No A*-C	
1864	17.9	Boys	104	60	44	60
1268	16.7	Girls	76	36	40	36
3132	34.6	Total	180	96	84	96

Enterprise and Employability This examination is recognised as the equivalent of ½ a GCSE

Mean Score	Grade	No Sat	Level 2	No A*-C
92	23.0	Boys	4	4
115	23.0	Girls	5	5
207	46	Total	9	9

Adult Literacy This examination is recognised as the equivalent of ½ a GCSE

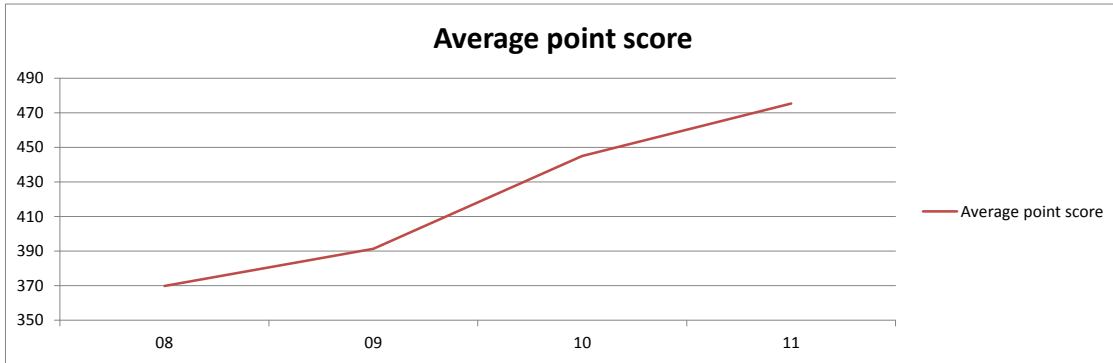
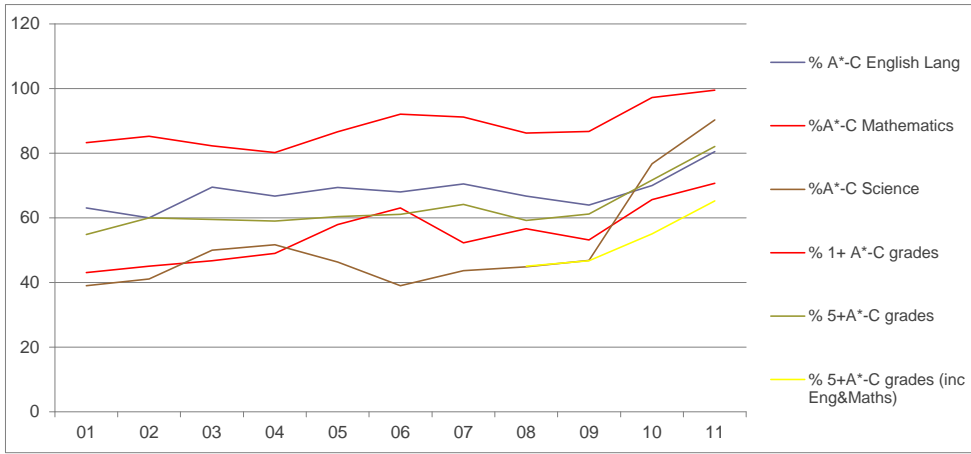
Mean Score	Grade	No Sat	Level 2	No A*-C
966	23.0	Boys	42	42
621	23.0	Girls	27	27
1587	46	Total	69	69

Adult Numeracy This examination is recognised as the equivalent of ½ a GCSE

Mean Score	Grade	No Sat	Level 2	No A*-C
1012	23.0	Boys	44	44
736	23.0	Girls	32	32
1748	46	Total	76	76

(29) Comparison with Y11 results 2000-2011

	01	02	03	04	05	06	07	08	09	10	11
% A*-C English Lang	63	60	69	67	69	68	70	67	64	70	80
%A*-C Mathematics	43	45	47	49	58	63	52	57	53	66	71
%A*-C Science	39	41	50	52	46	39	44	45	47	77	90
% 1+ A*-C grades	83	85	82	80	87	92	91	86	87	97	99
% 5+A*-C grades	55	60	59	59	60	61	64	59	61	72	82
% 5+A*-C grades (inc Eng&Maths)								45	47	55	65
% leavers with no GCSEs	3	5	1	2	2	2	4	11	3	1	0
Average No A*-C grades	6	6	6	7	6	7	7	6	6	8	9
Average point score				428.1	404	435	408	370	391	445	475



Please note that the total number of students sitting an exam may not appear to equal the total number of grades in some subjects due to some courses having half, double or quadruple values.